

UNIFIED SCHOOL DISTRICT 434

SANTA FE TRAIL HIGH SCHOOL

PROJECT 1806-02: ENTRANCE

PROJECT CONSULTANTS:

ARCHITECT: PEARSON ARCHITECTURE STUDIO
OSAGE CITY, KS
BOBBI@PEARSON-STUDIO.COM
785-220-6898

ENGINEER: LATIMER SOMMERS AND ASSOCIATES PA
TOPEKA, KS
785-233-3232
WBASSETTE@LSAPA.COM

SECURITY: PER SEPARATE CONTRACT FOR CONTRACTOR COORDINATION

DRAWING INDEX:

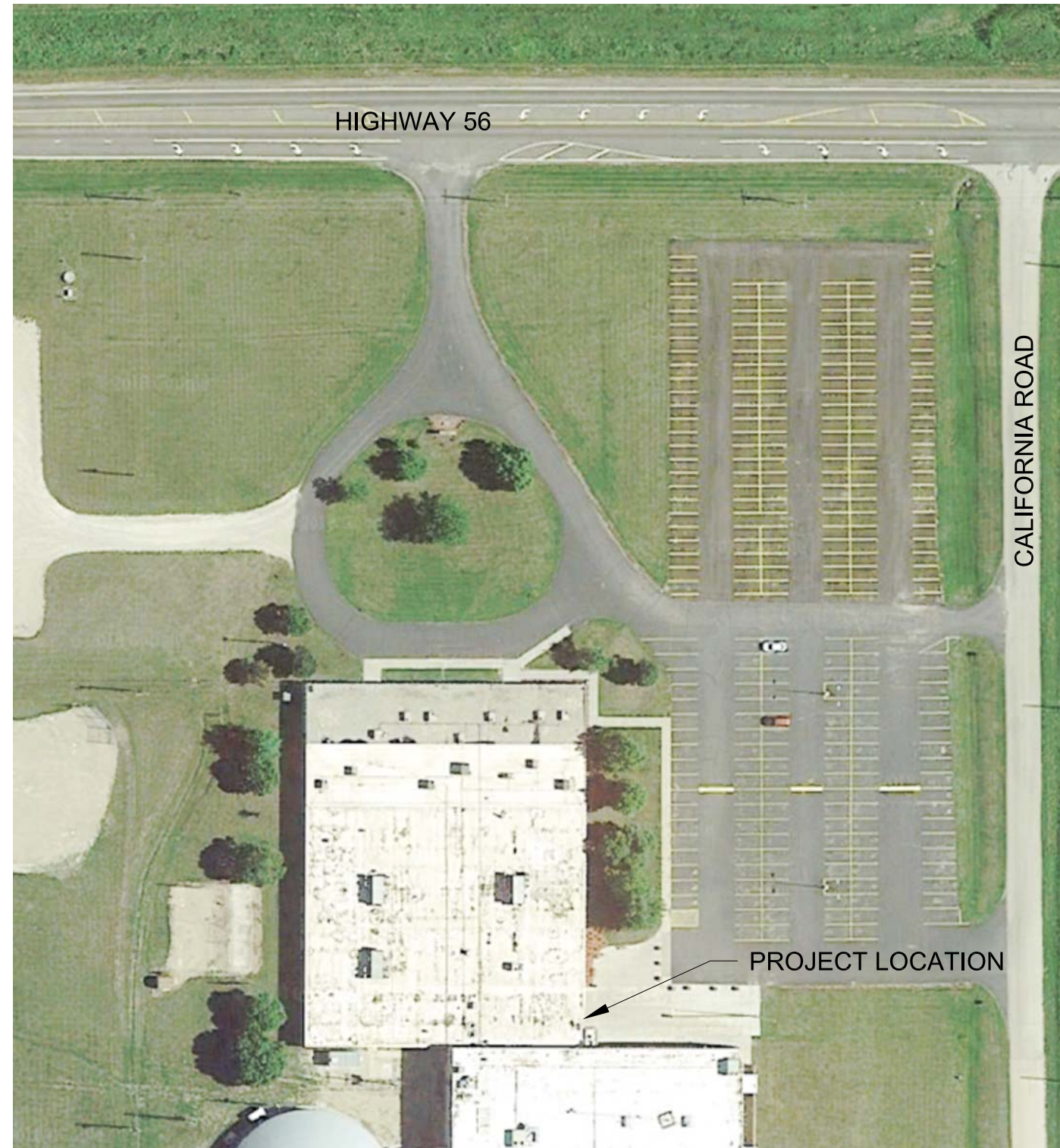
G1.0 GENERAL INFORMATION
G2.0 EXISTING CONDITIONS PHOTOS
G2.1 EXISTING CONDITIONS PHOTOS
D1.0 DEMOLITION PLAN
A1.0 FLOOR PLAN
A2.0 REFLECTED CEILING PLAN
A3.0 DETAILS
E1.0 ELECTRICAL DEMOLITION PLAN
E1.1 ELECTRICAL FLOOR PLAN
E2.0 ELECTRICAL REFLECTED CEILING PLAN

PROJECT SCOPE:

SANTA FE TRAIL HIGH SCHOOL
INTERIOR DEMOLITION AND CONSTRUCTION TO DEFINE SEPARATE,
CONTROLLED ACCESS COMMUNICATING WITH ADJACENT ADMINISTRATION
OFFICE. EXISTING EXTERIOR AND INTERIOR STOREFRONT SYSTEMS WILL BE
MODIFIED; NEW PARTITION, INTERIOR DOOR, AND INTERIOR WINDOW
ASSEMBLIES SHALL BE INCORPORATED; AND ASSOCIATED MISC
CONSTRUCTION PER PROJECT DRAWINGS AND SPECIFICATIONS.

GENERAL NOTES:

CONTRACTOR SHALL BE RESPONSIBLE FOR VERIFYING DIMENSIONS, DETAILS,
MEANS AND METHODS IN CONSTRUCTION. DO NOT SCALE ILLUSTRATIONS.



EXISTING SITE

pearson
architecture studio
bobbi@pearson-studio.com
785 220 6898

DATE: 5 DECEMBER 2018

UNIFIED SCHOOL DISTRICT 434

SANTA FE TRAIL HIGH SCHOOL
15701 SOUTH CALIFORNIA ROAD
CARBONDALE, KANSAS 66414



GENERAL

G1.0

PROJECT 1806-02



1



2



3



4



5 REMOVE CONDUIT & EXISTING CONSTRUCTIONS AT AREA OF HORIZONTAL LOUVERED PANELS, PREPARE FOR NEW WORK, REF PLAN & ELEV



6

EXISTING CONDITIONS
N.T.S.

pearson
architecture studio
bobbi@pearson-studio.com
785 220 6898

DATE: 5 DECEMBER 2018
UNIFIED SCHOOL DISTRICT 434
SANTA FE TRAIL HIGH SCHOOL
15701 SOUTH CALIFORNIA ROAD
CARBONDALE, KANSAS 66414



PHOTOS
G2.0
PROJECT 1806-02



1



2



3



4 REMOVE BULLETIN BD & EXISTING CONSTRUCTIONS TO PREPARE FOR NEW WINDOW AND ASSOCIATED CONST, REF PLAN & ELEV

pearson
 architecture studio
 bobbi@pearson-studio.com
 785 220 6898

DATE: 5 DECEMBER 2018

UNIFIED SCHOOL DISTRICT 434

SANTA FE TRAIL HIGH SCHOOL
 15701 SOUTH CALIFORNIA ROAD
 CARBONDALE, KANSAS 66414



EXISTING CONDITIONS

N.T.S.

PHOTOS

G2.1

PROJECT 1806-02

REMOVE EXISTING SOLID PANEL WOOD DOOR,
MAINTAIN EXISTING TRANSOM,
SALVAGE HARDWARE FOR REUSE

REMOVE EXISTING PORTION OF SYSTEM,
REF NEW WORK FLOOR PLAN

VENDING SHALL BE RELOCATED BY OWNER.
ADDL POWER, IF REQD, WILL BE PROVIDED BY OWNER.
EXISTING AWARD CASE MAY RELOCATE BY OWNER TO
NEW PARTITION. PATCH & PAINT EXISTING BY OWNER.

VENDING TO BE RELOCATED
ELSEWHERE BY OWNER

DEMO INFILL TO EXPOSE
ORIGINAL OPENING,
REF NEW WORK PLAN

 NORTH
DEMOLITION PLAN
1/4" = 1'-0"

RELATED ITEMS BY SEPARATE CONTRACT:

- SIGNAGE
- REPLACEMENT OF EXISTING SUSPENDED GRID LIGHTING
- VENDING OR TROPHY EQUIP-FIXTURES AND ASSOCIATED WORK
- MISC SECURITY OR TECHNOLOGY DESIGN, INSTALLATION, EQUIP AND SOFTWARE
- FIELD-APPLIED GLAZING FILM

pearson
architecture studio
bobbi@pearson-studio.com
785 220 6898

DATE: 5 DECEMBER 2018

UNIFIED SCHOOL DISTRICT 434

SANTA FE TRAIL HIGH SCHOOL
15701 SOUTH CALIFORNIA ROAD
CARBONDALE, KANSAS 66414



DEMO PLAN

D1.0

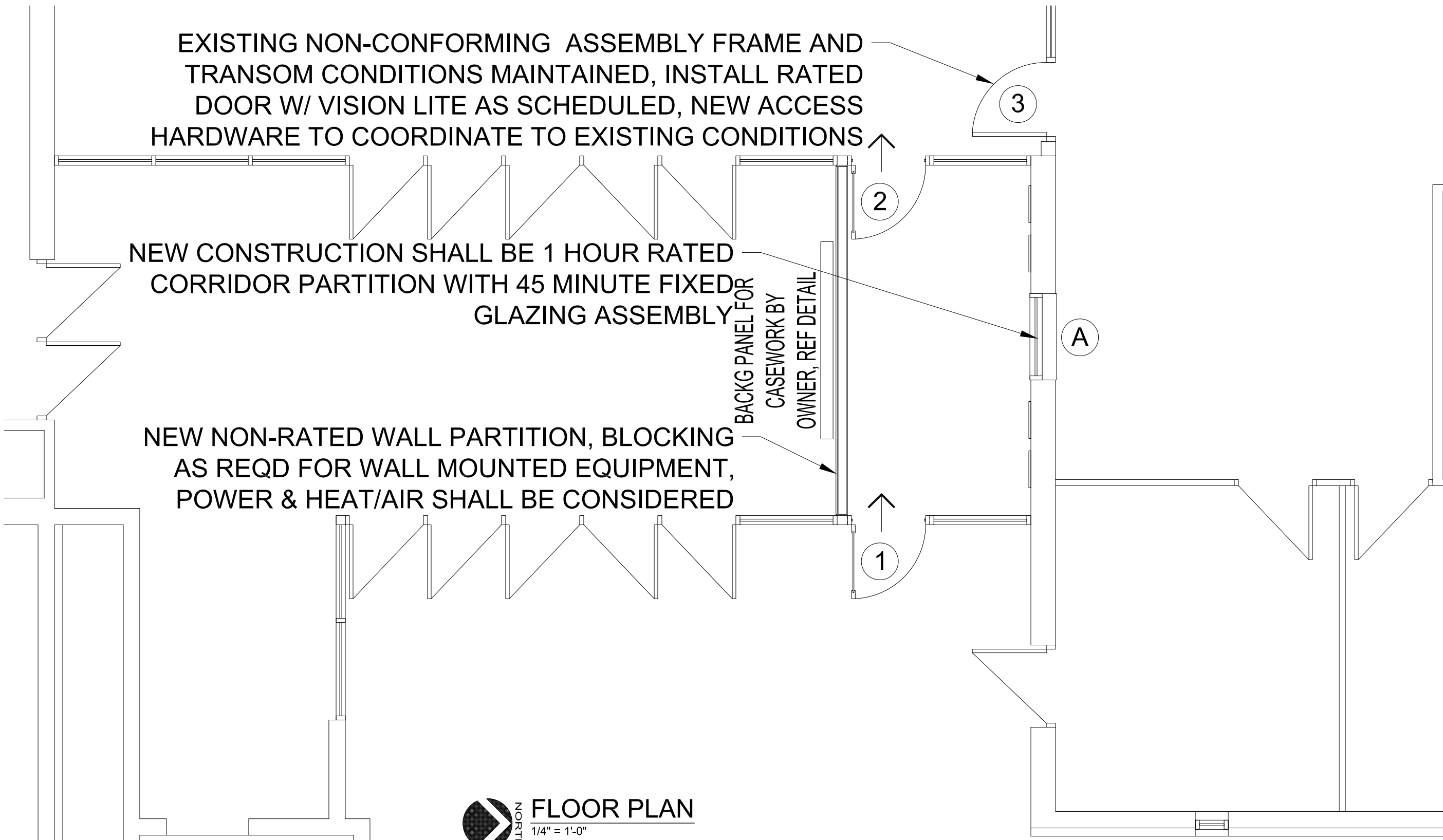
PROJECT 1806-02

EXISTING NON-CONFORMING ASSEMBLY FRAME AND TRANSOM CONDITIONS MAINTAINED, INSTALL RATED DOOR W/ VISION LITE AS SCHEDULED, NEW ACCESS HARDWARE TO COORDINATE TO EXISTING CONDITIONS

NEW CONSTRUCTION SHALL BE 1 HOUR RATED CORRIDOR PARTITION WITH 45 MINUTE FIXED GLAZING ASSEMBLY

NEW NON-RATED WALL PARTITION, BLOCKING AS REQD FOR WALL MOUNTED EQUIPMENT, POWER & HEAT/AIR SHALL BE CONSIDERED

BACKG PANEL FOR CASEWORK BY OWNER, REF DETAIL



FLOOR PLAN
 1/4" = 1'-0"

WINDOW SCHEDULE

WINDOW #	MATL	FINISH	GLAZING	DETAIL	ASSEMBLY RATING	NOTES
SFT A	HM	PAINT	OH-45	SHT A3.0	45 MIN	1

NOTE: 1. WINDOW ASSEMBLY FOR 1 HR FIRE PARTITION PER INTL BLDG CODE TABLE 716.1(3)

DOOR & FRAME SCHEDULE

DOORS						FRAMES			ASSEMBLY RATING	NOTES
DOOR #	WIDTH	HEIGHT	THICKNESS	MATL	FINISH	MATL	FINISH	DETAIL		
SFT 1	3-0	7-0	1 3/4"	ALUM	SATIN	ALUM	SATIN	SHT A3.0	-	1
SFT 2	3-0	7-0	1 3/4"	ALUM	SATIN	ALUM	SATIN	SHT A3.0	-	1
SFT 3	3-0 VERIFY	7-0 VERIFY	1 3/4"	WD	STAIN TO MATCH	EXIST	EXIST	SHT A3.0	20 MIN	2

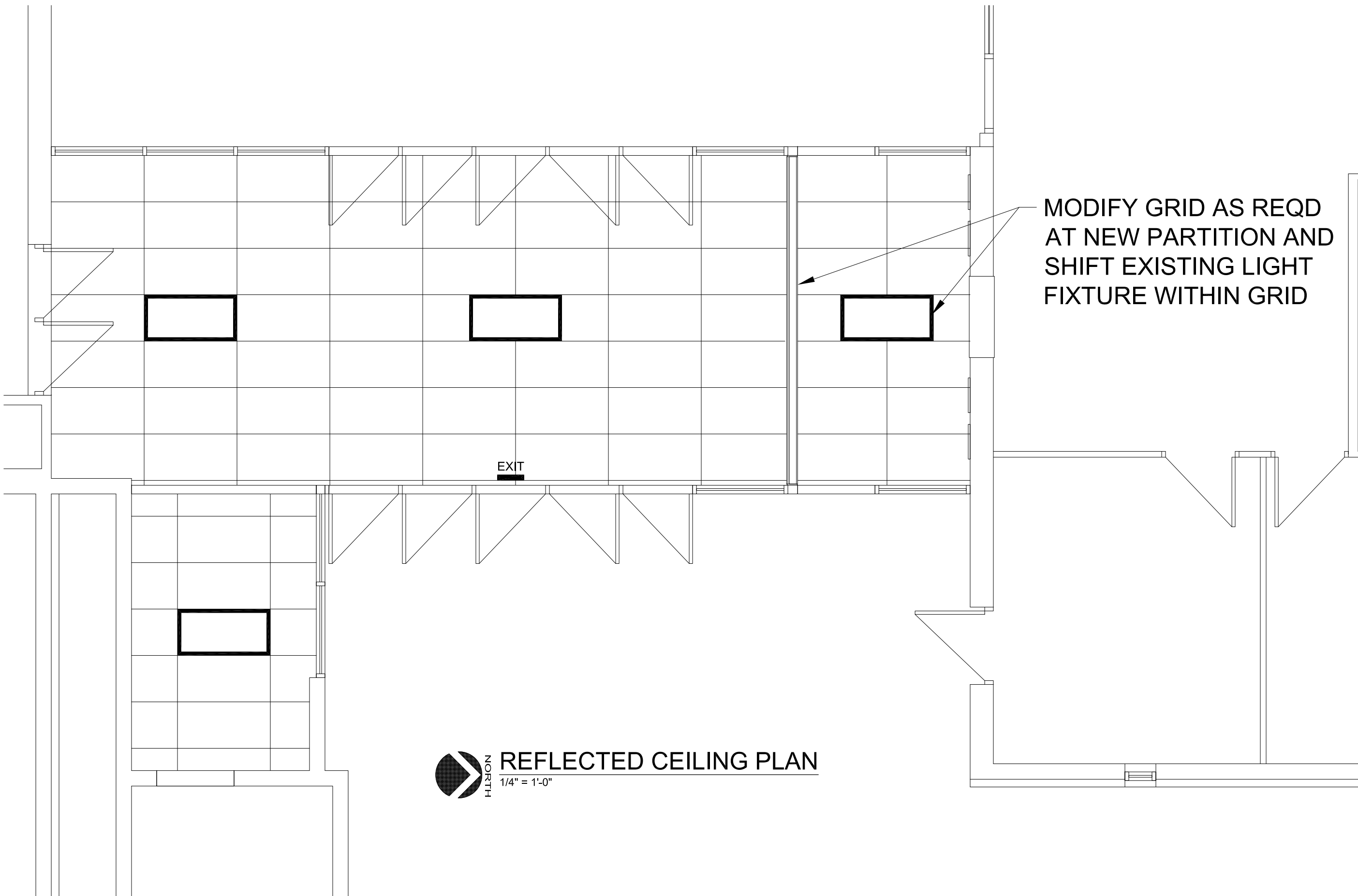
NOTES: 1. RESTRICTED ACCESS, COORDINATE WITH SECURITY CONTRACTOR
 2. DOOR VISION PANEL D-20 LABEL FOR 1 HR FIRE PARTITION CORRIDOR WALL PER INTL BLDG CODE TABLE 716.1(2)



FLOOR PLAN

A1.0

PROJECT 1806-02



REFLECTED CEILING PLAN
1/4" = 1'-0"

MODIFY GRID AS REQD
AT NEW PARTITION AND
SHIFT EXISTING LIGHT
FIXTURE WITHIN GRID

pearson
architecture studio
bobbi@pearson-studio.com
785 220 6898

DATE: 5 DECEMBER 2018

UNIFIED SCHOOL DISTRICT 434

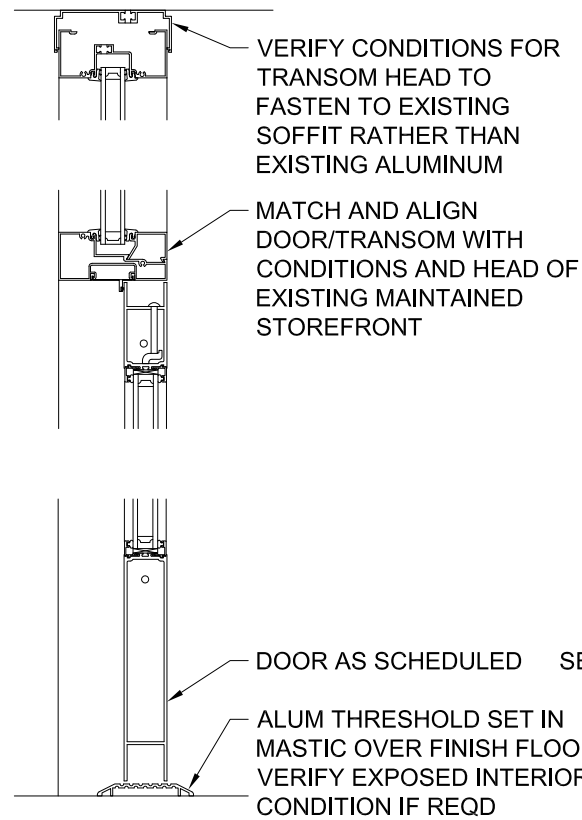
SANTA FE TRAIL HIGH SCHOOL
15701 SOUTH CALIFORNIA ROAD
CARBONDALE, KANSAS 66414



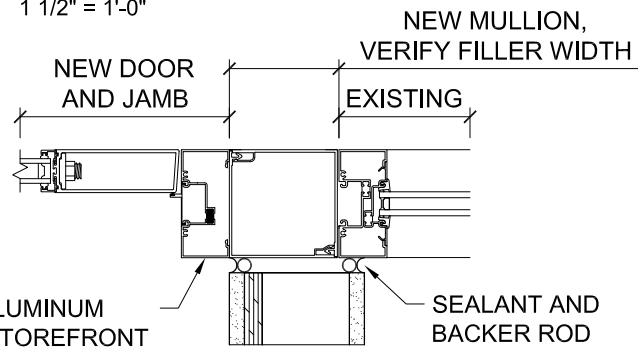
CEILING PLAN

A2.0

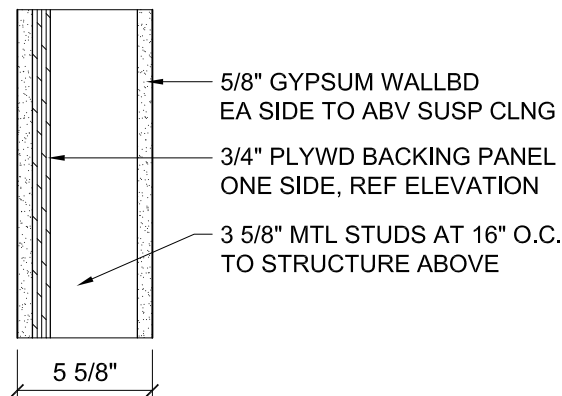
PROJECT 1806-02



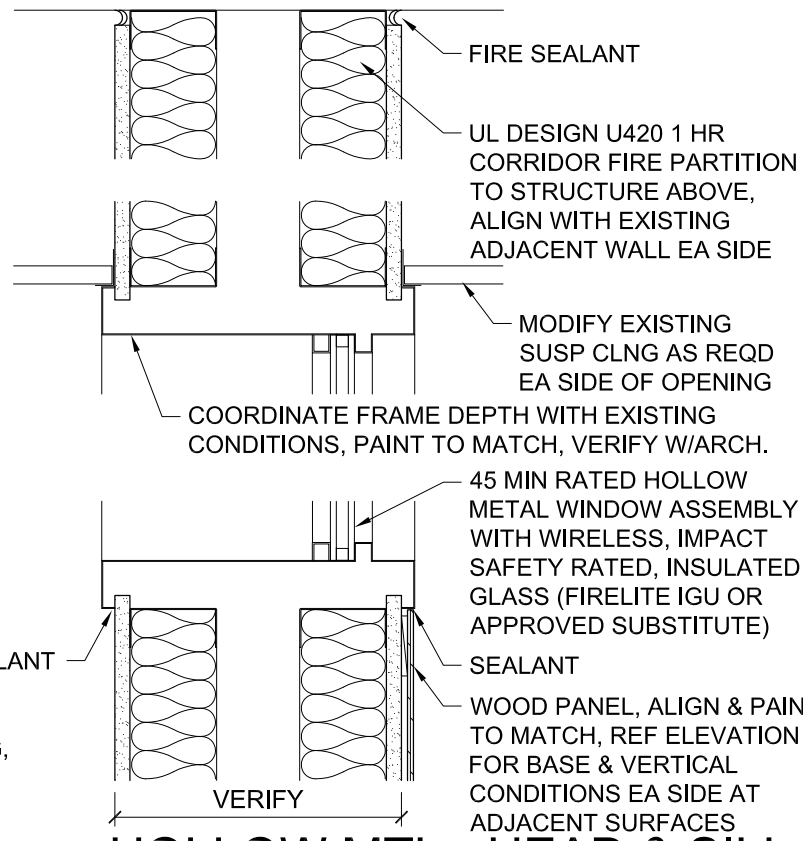
1 ALUMINUM - HEAD & SILL
1 1/2" = 1'-0"



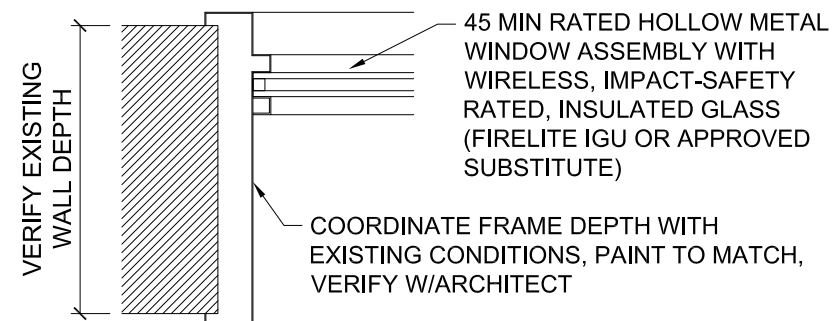
2 ALUMINUM - JAMB
1 1/2" = 1'-0" AT INTERIOR PARTITION



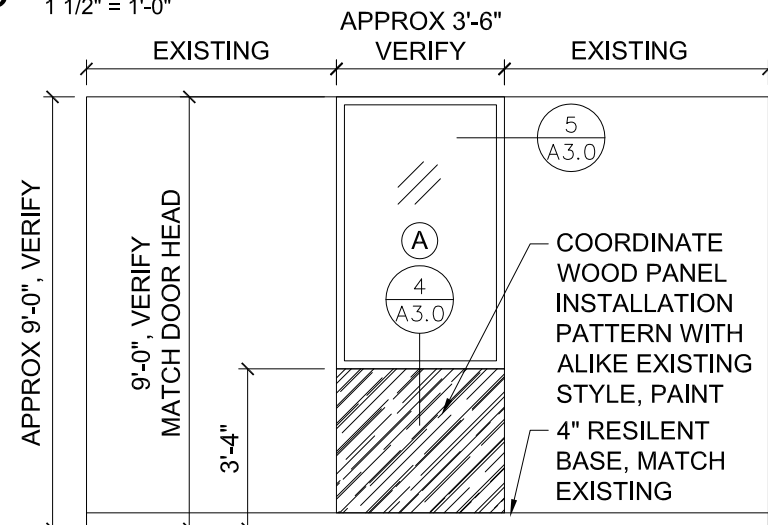
3 INTERIOR PARTITION
1 1/2" = 1'-0" NON-RATED W/ BACKING



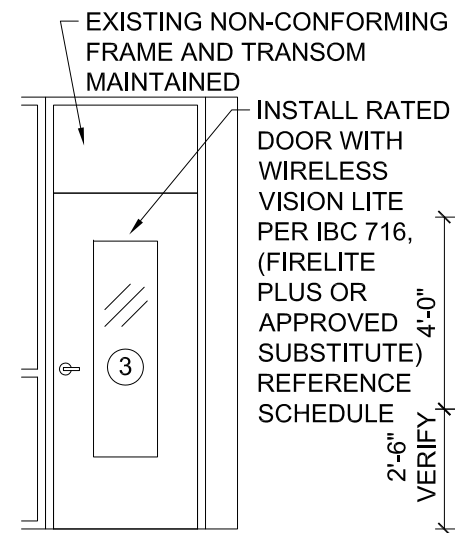
4 HOLLOW MTL - HEAD & SILL
1 1/2" = 1'-0"



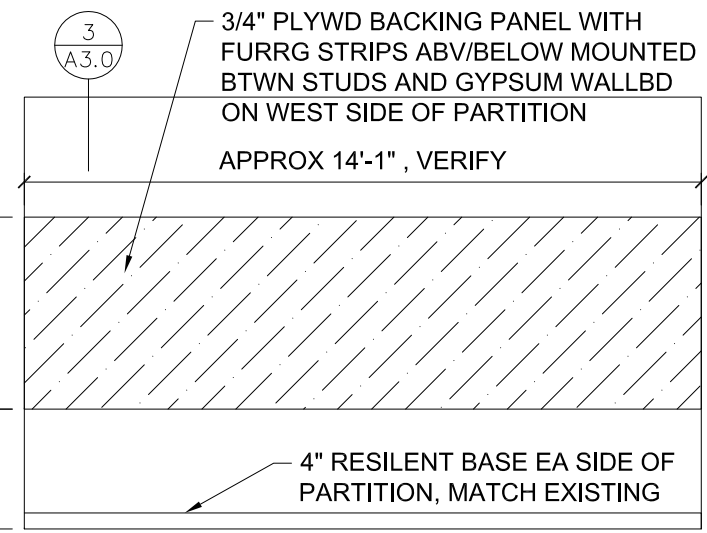
5 HOLLOW MTL - JAMB
1 1/2" = 1'-0"



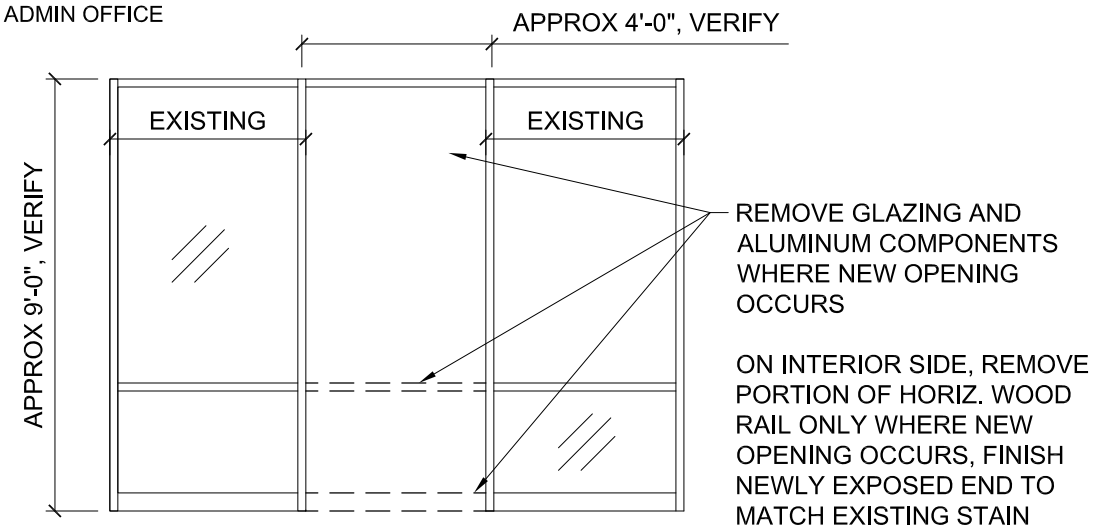
INTERIOR PARTITION INFILL
1/4" = 1'-0" PARTIAL WALL AND FIXED WINDOW



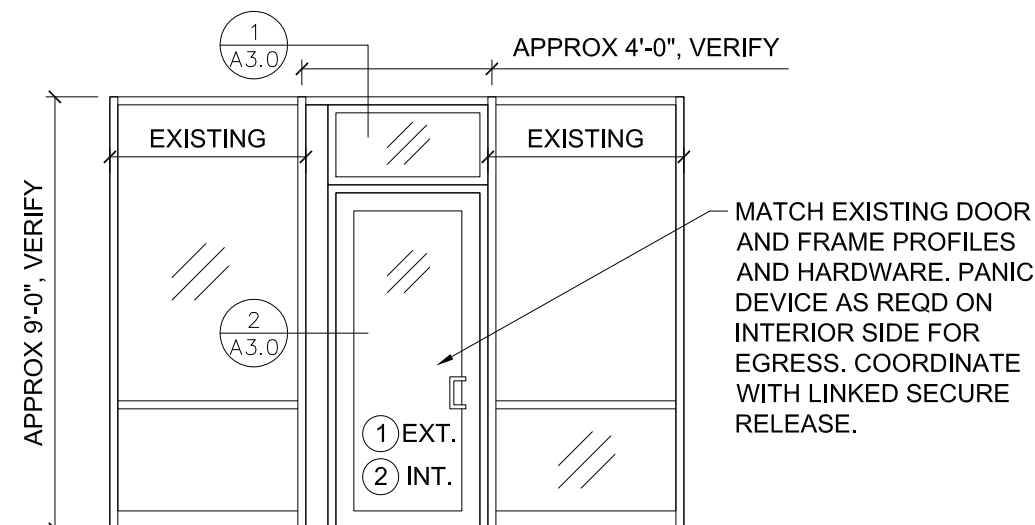
DOOR
1/4" = 1'-0" CORRIDOR WALL FIRE PARTITION TO ADMIN OFFICE



BACKING PANEL LAYOUT
1/4" = 1'-0" NON-RATED INTERIOR PARTITION



EXISTING - EXTERIOR VIEW
1/4" = 1'-0" EXTERIOR & INTERIOR STOREFRONTS



NEW - EXTERIOR VIEW
1/4" = 1'-0" EXTERIOR & INTERIOR STOREFRONTS

DATE: 5 DECEMBER 2018

UNIFIED SCHOOL DISTRICT 434

SANTA FE TRAIL HIGH SCHOOL
15701 SOUTH CALIFORNIA ROAD
CARBONDALE, KANSAS 66414

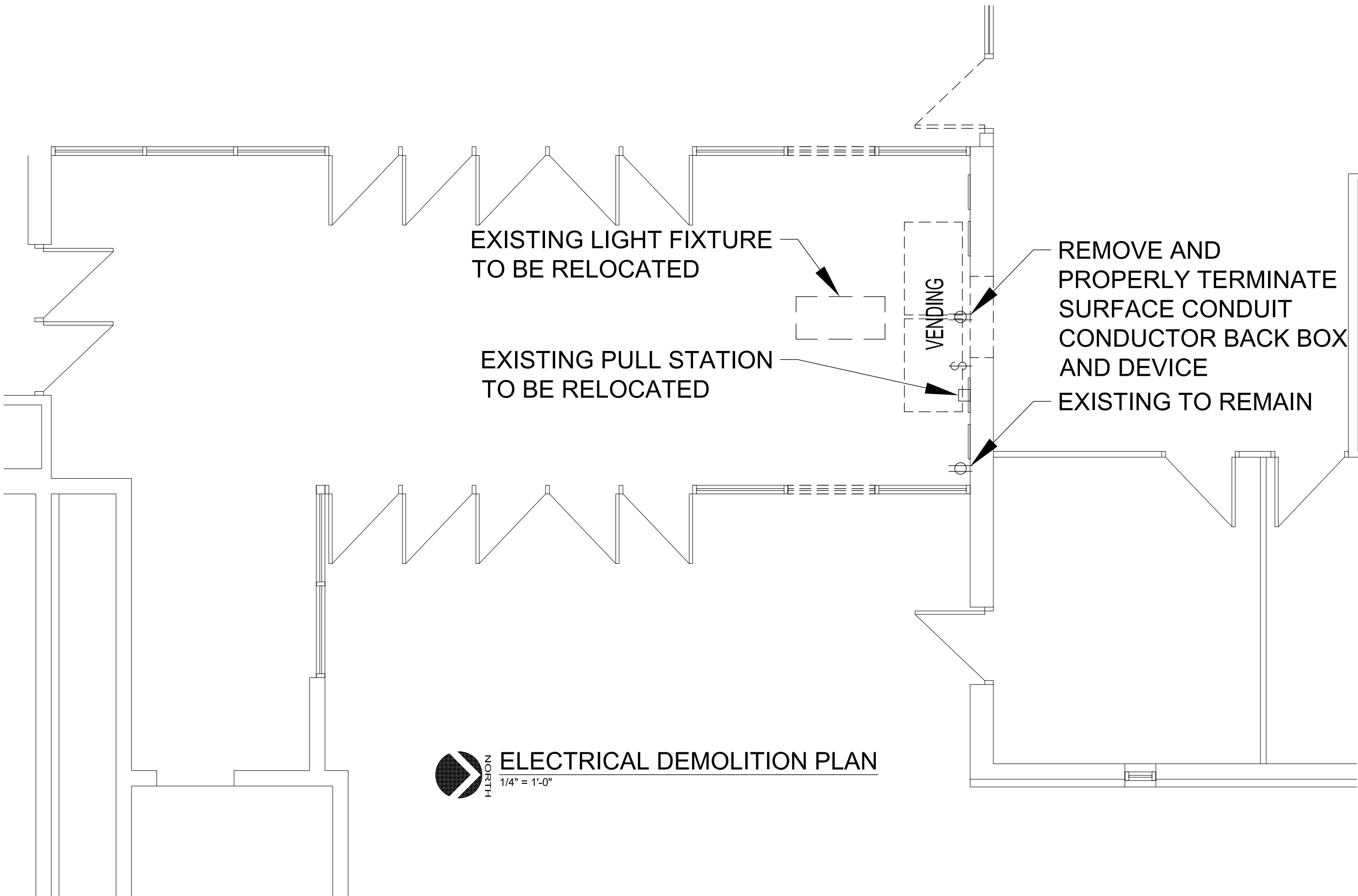
pearson
architecture studio
bobbi@pearson-studio.com
785 220 6898



DETAILS

A3.0

PROJECT 1806-02



ELECTRICAL DEMOLITION PLAN
1/4" = 1'-0"

pearson
architecture studio
bobbi@pearson-studio.com
785 220 6898

DATE: 5 DECEMBER 2018

UNIFIED SCHOOL DISTRICT 434

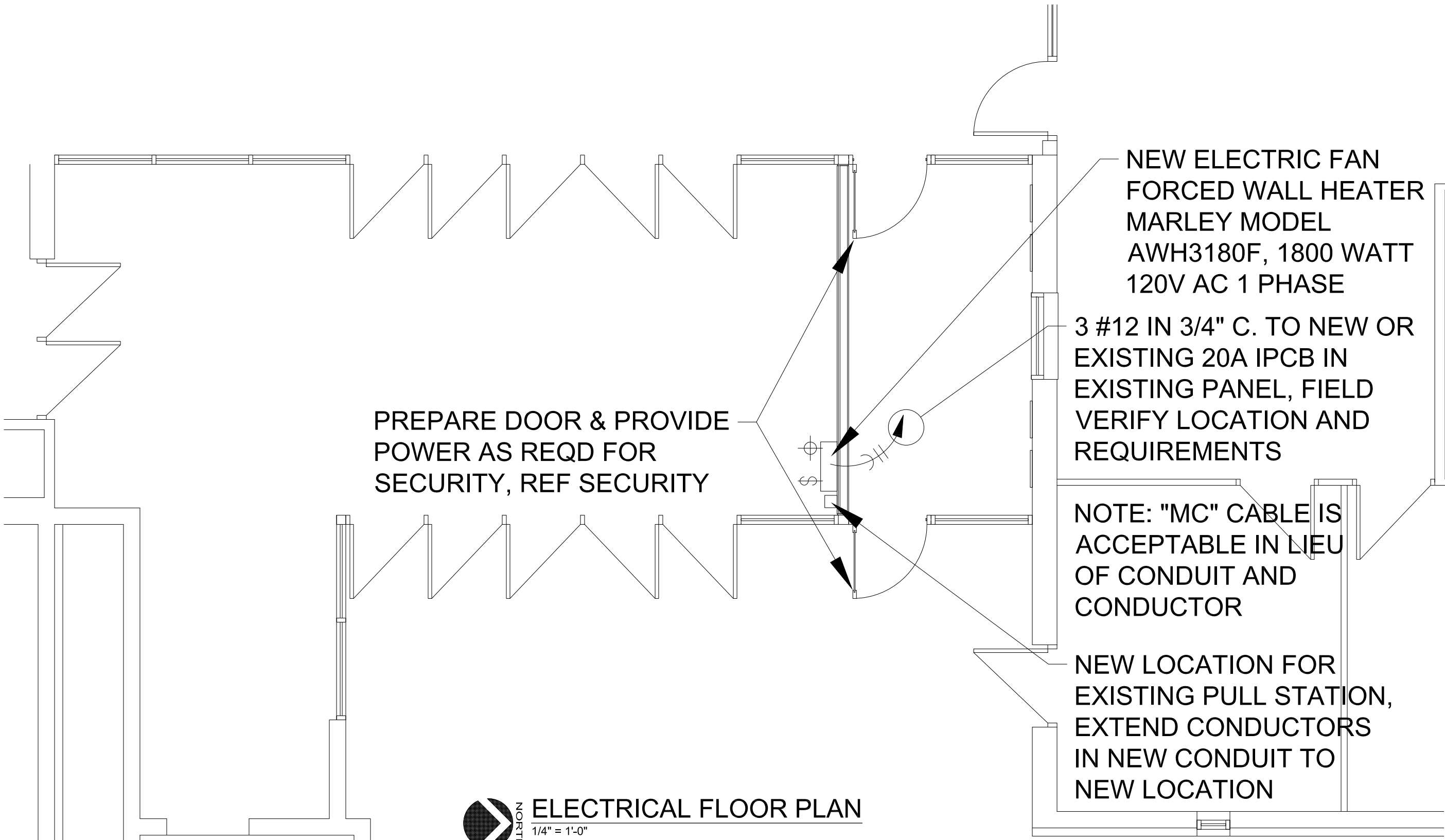
SANTA FE TRAIL HIGH SCHOOL
15701 SOUTH CALIFORNIA STREET
CARBONDALE, KANSAS 66414



ELECT - DEMO

E1.0

PROJECT 1806-02



PREPARE DOOR & PROVIDE
POWER AS REQD FOR
SECURITY, REF SECURITY

NEW ELECTRIC FAN
FORCED WALL HEATER
MARLEY MODEL
AWH3180F, 1800 WATT
120V AC 1 PHASE

3 #12 IN 3/4" C. TO NEW OR
EXISTING 20A IPCB IN
EXISTING PANEL, FIELD
VERIFY LOCATION AND
REQUIREMENTS

NOTE: "MC" CABLE IS
ACCEPTABLE IN LIEU
OF CONDUIT AND
CONDUCTOR

NEW LOCATION FOR
EXISTING PULL STATION,
EXTEND CONDUCTORS
IN NEW CONDUIT TO
NEW LOCATION



ELECTRICAL FLOOR PLAN

1/4" = 1'-0"

pearson
architecture studio
bobbi@pearson-studio.com
785 220 6898

DATE: 5 DECEMBER 2018

UNIFIED SCHOOL DISTRICT 434

SANTA FE TRAIL HIGH SCHOOL
15701 SOUTH CALIFORNIA STREET
CARBONDALE, KANSAS 66414

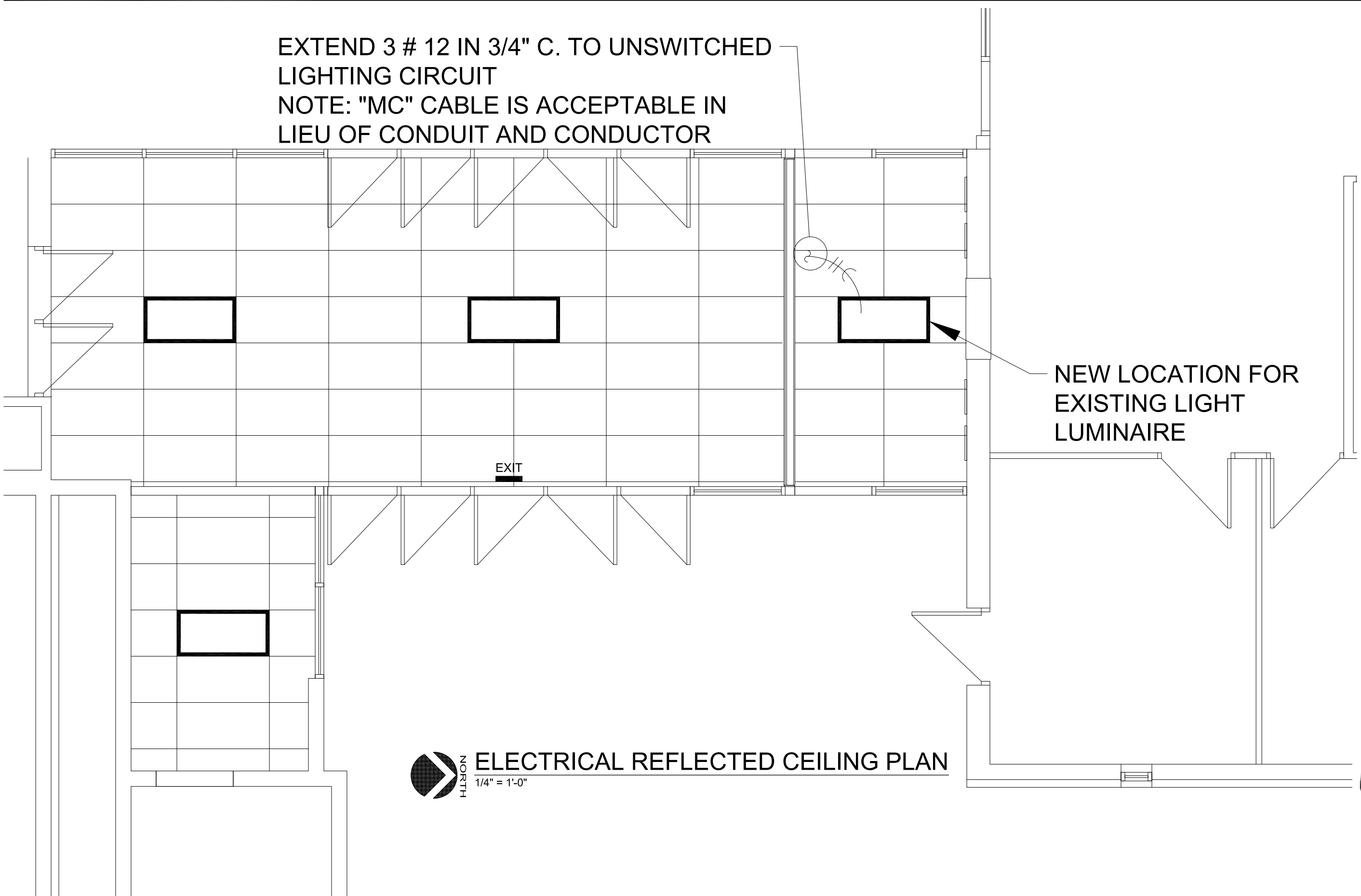


ELECT - NEW

E1.1

PROJECT 1806-02

EXTEND 3 # 12 IN 3/4" C. TO UNSWITCHED LIGHTING CIRCUIT
NOTE: "MC" CABLE IS ACCEPTABLE IN LIEU OF CONDUIT AND CONDUCTOR



NEW LOCATION FOR EXISTING LIGHT LUMINAIRE



ELECTRICAL REFLECTED CEILING PLAN

1/4" = 1'-0"

pearson
architecture studio
bobbi@pearson-studio.com
785 220 6898

DATE: 5 DECEMBER 2018

UNIFIED SCHOOL DISTRICT 434

SANTA FE TRAIL HIGH SCHOOL
15701 SOUTH CALIFORNIA STREET
CARBONDALE, KANSAS 66414



ELECT - CEILING

E2.0

PROJECT 1806-02